

## TODAY'S AGENDA: September 21<sup>th</sup>

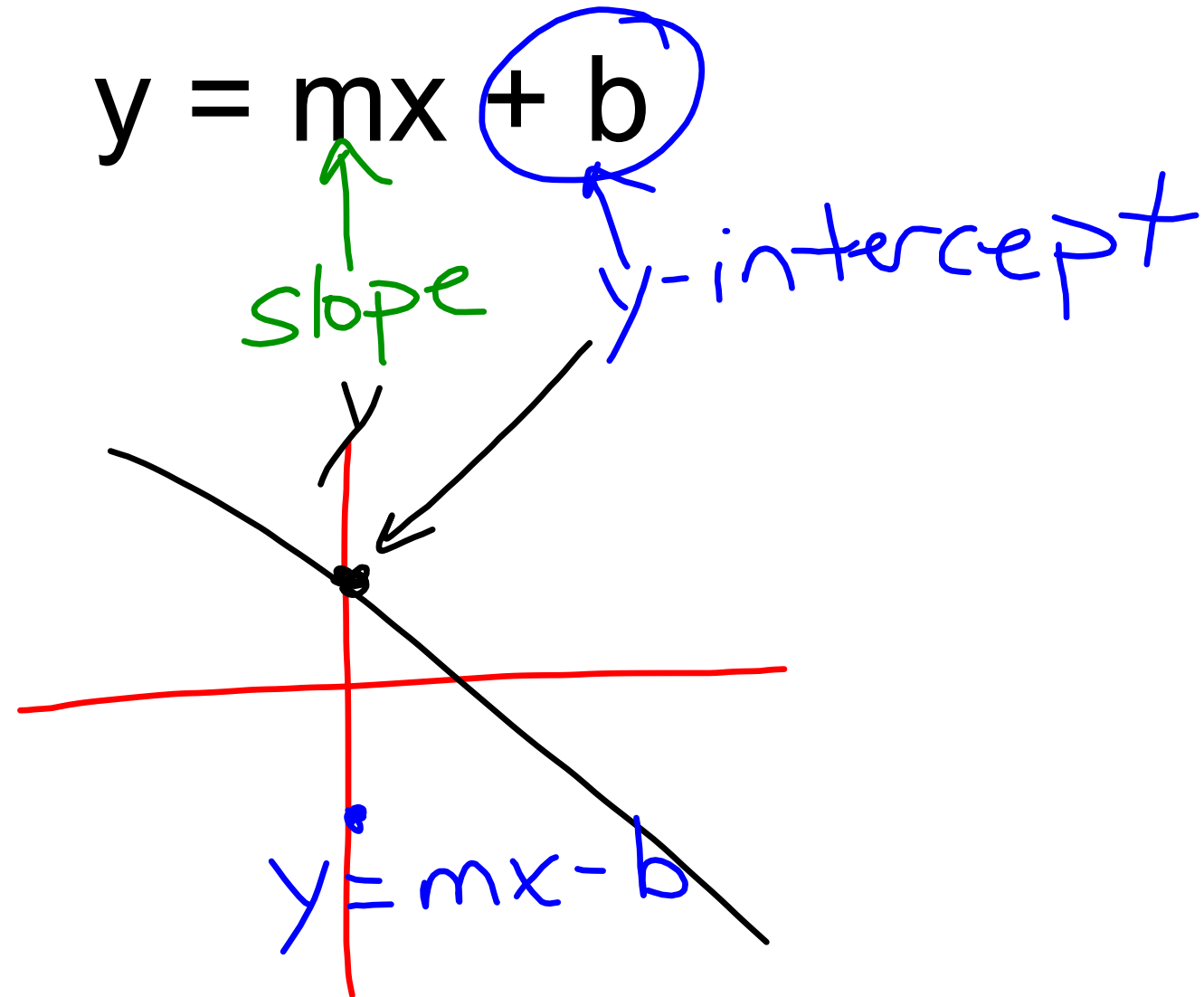
- Work on Khan Academy Mission:
  - > Graph from Slope Intercept Form
- Today's Objective: Whole-Group Lesson:
  - > Graph from Slope Intercept Form
- Remember:  $y=mx+b$ ?
- New Login Procedure from the District...
- Continue With Your Mission Assignments

# New Login Procedure from the District:

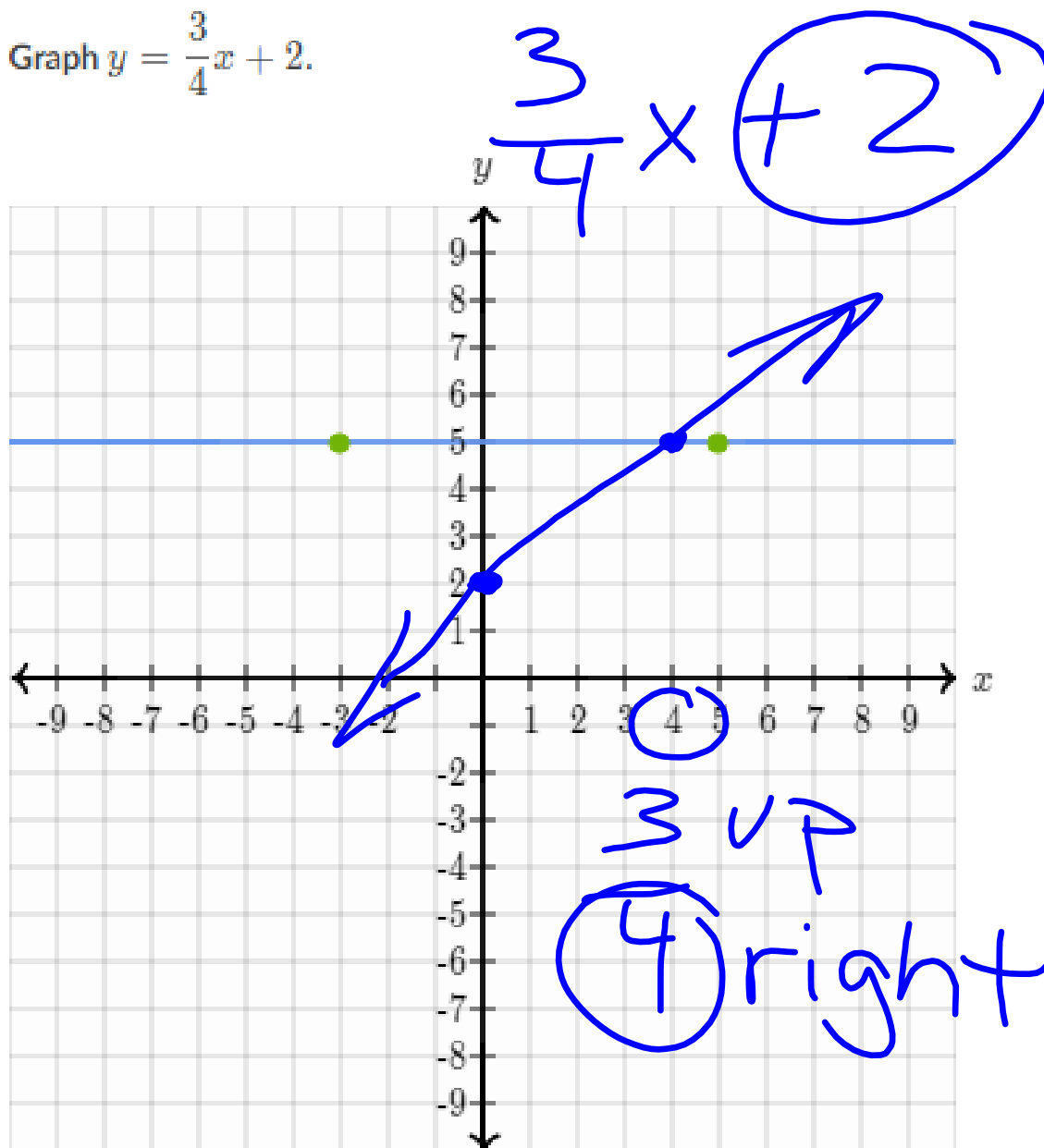
## Clever Login:

To access Clever:

1. Go to HYPERLINK "<http://www.clever.com/in/yonkers>"  
[www.clever.com/in/yonkers](http://www.clever.com/in/yonkers) from any Internet-enabled device. In a few days, this will be the landing page on district devices.
2. Click on "Log in with LDAP"
3. Enter your **district e-mail address**:
  1. For students, this is their 6 digit student ID followed by "[@yonkerspublicschools.org](mailto:123456@yonkerspublicschools.org)" (e.g. HYPERLINK "<mailto:123456@yonkerspublicschools.org>"  
[123456@yonkerspublicschools.org](mailto:123456@yonkerspublicschools.org))
4. Enter your **district password** (same password used for district devices)



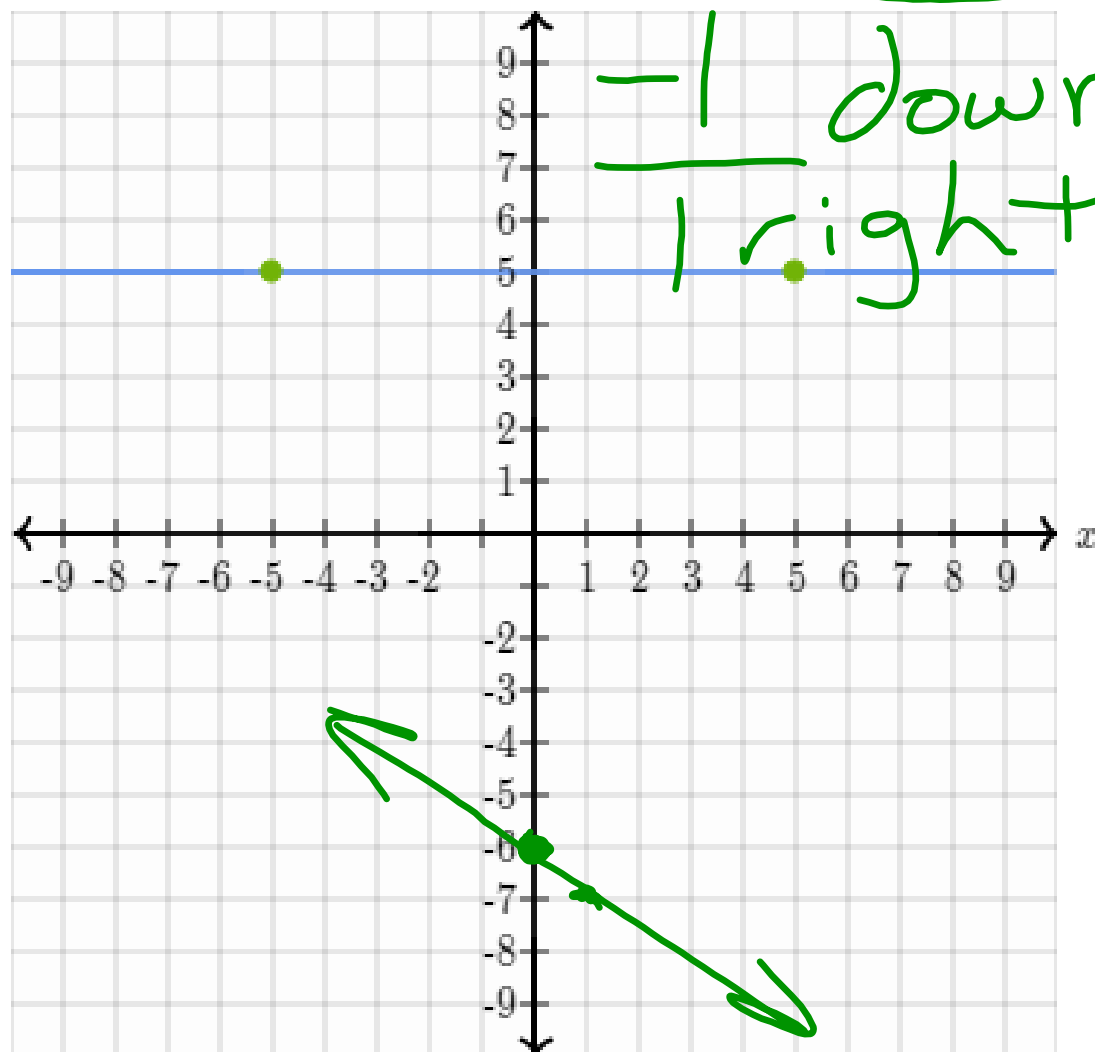
Graph  $y = \frac{3}{4}x + 2$ .



x	y
0	2
2	3
4	5
5	5

Graph  $y = -x - 6$ .

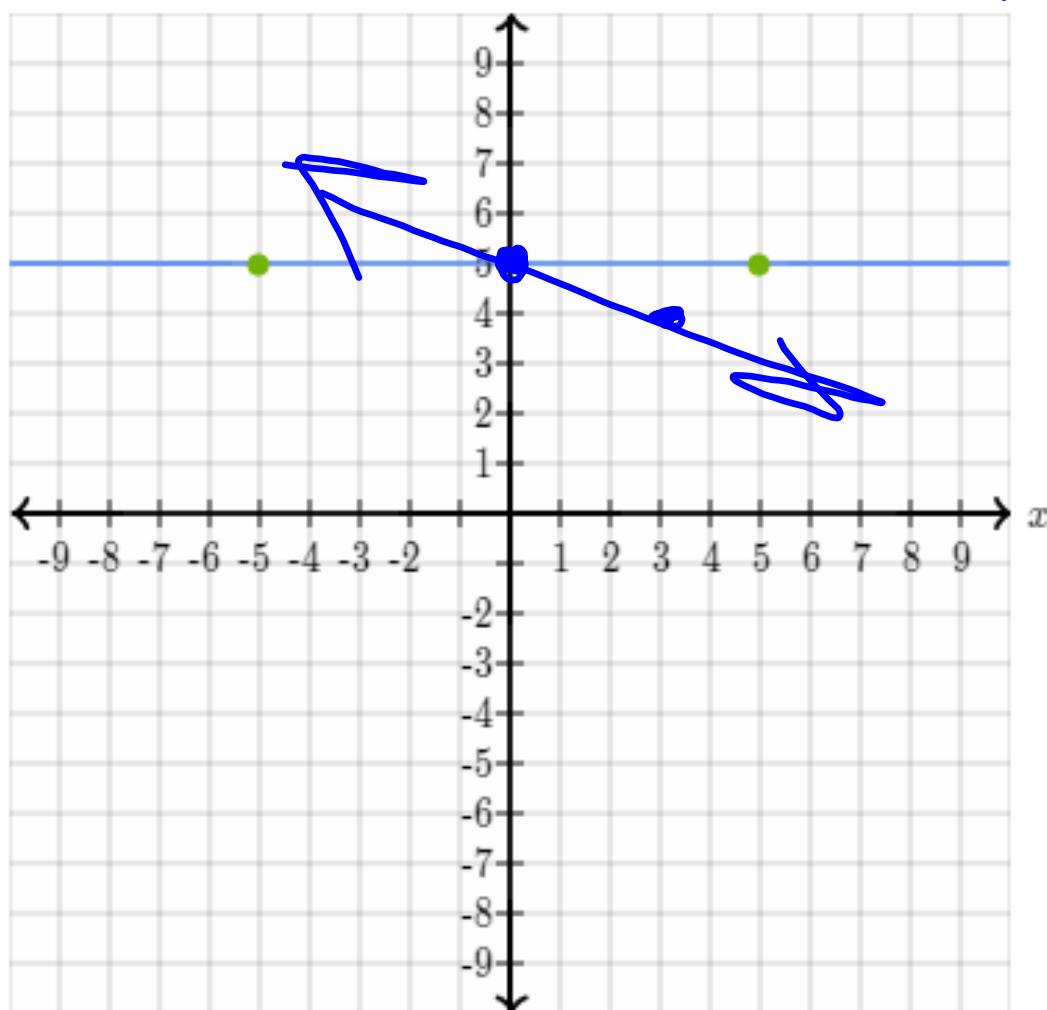
$$y = -x(-6)$$



$$\begin{array}{r} 0 \\ - \\ \hline -6 \\ -5 \end{array}$$

Graph  $y = -\frac{1}{3}x + 5$ .

$$y = -\frac{1}{3}x + 5$$

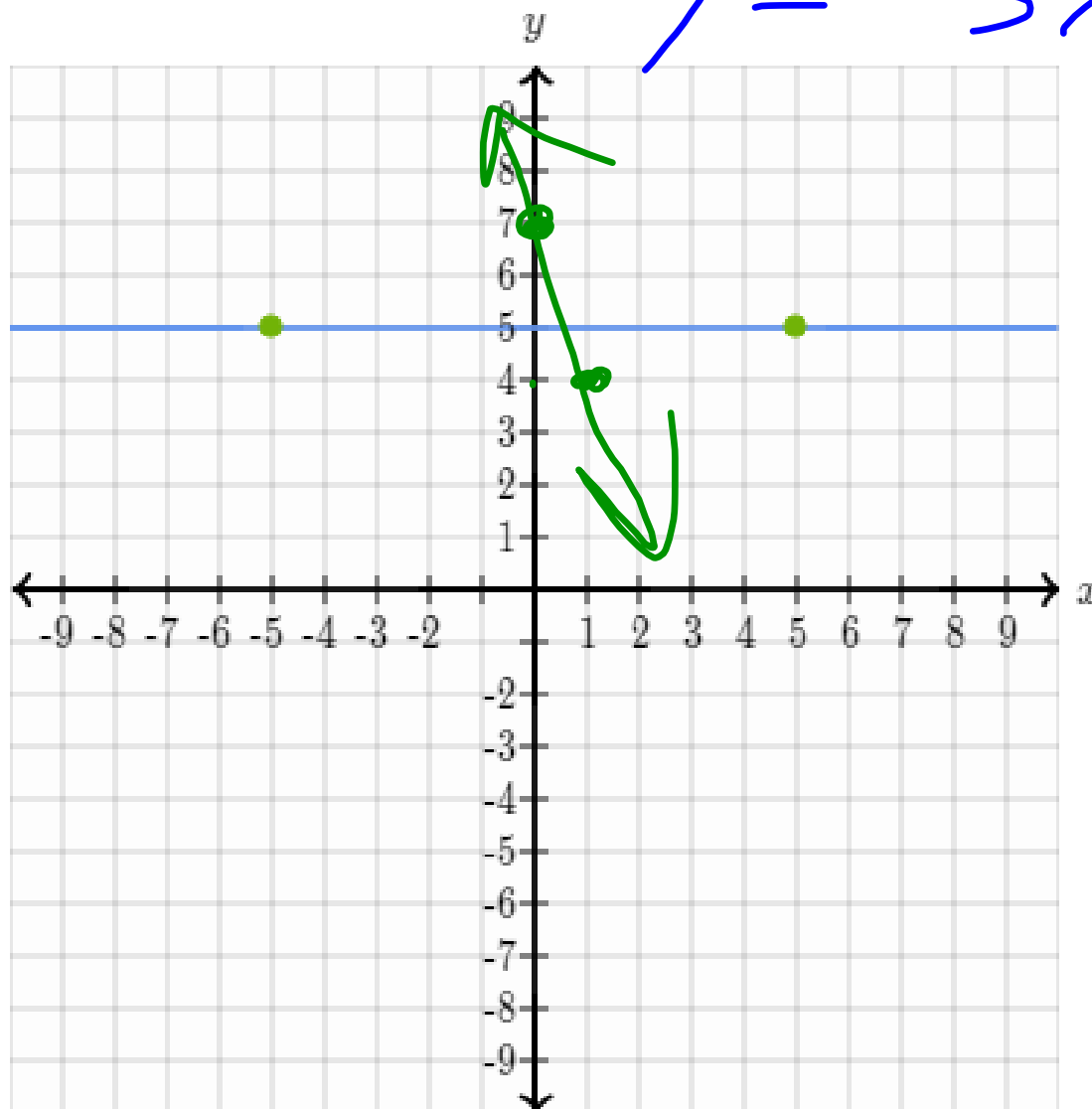


$-\frac{1}{3}$  down  
right

$$\frac{WN - 0/x}{\cancel{WN} \cdot \frac{1}{3}}$$

Graph  $y = -3x + 7$ .

$$y = -3x + 7$$



$\frac{-3}{1}$  down  
right

Graph  $y = \frac{6}{5}x + 1$ .

