

> TODAY'S AGENDA:

- Continue working on Khan Academy
- Mission: Engage NY Module 4
 - > Graph from Slope-Intercept Form

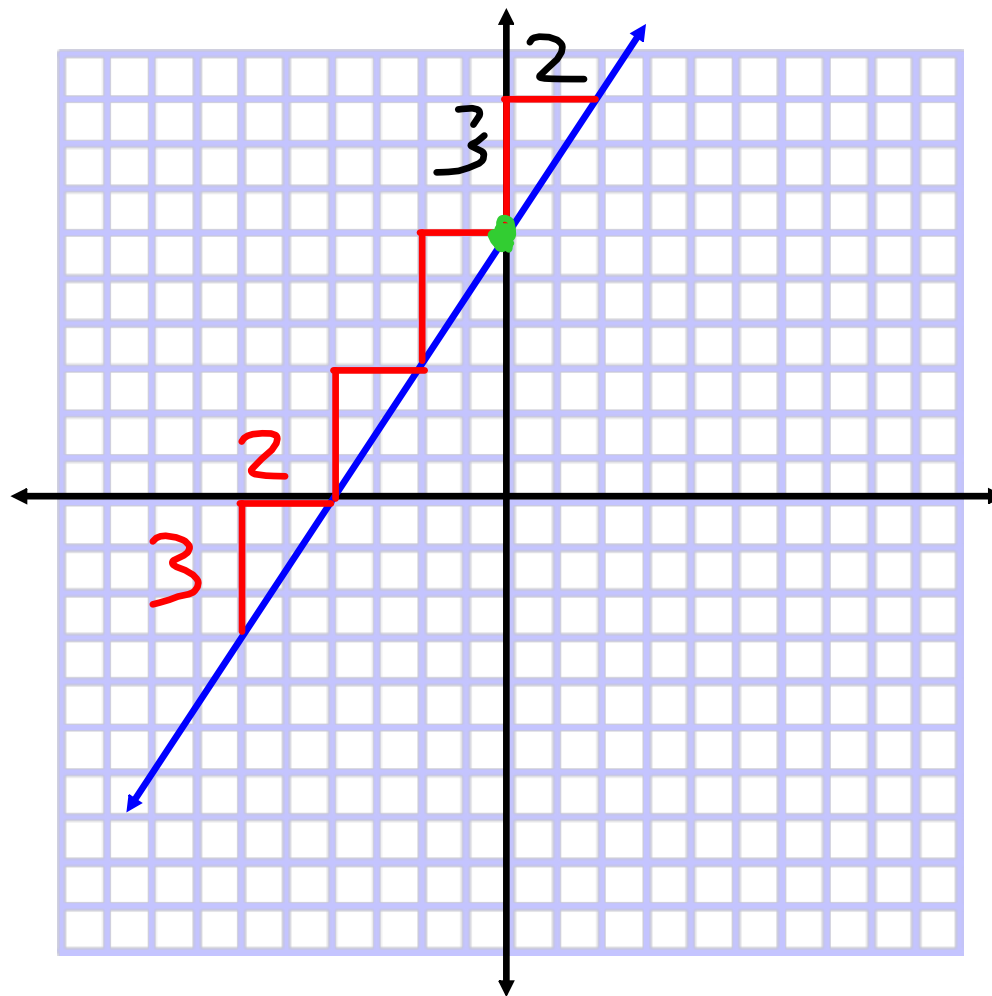
- Today's Objective:
 - > Students will be able to graph a line, given the equation of the line in Slope-Intercept Form

- Today's Standards:
 - > 8.F.A.1, 8.F.A.3, HSF.IF.C.7, HSF.IF.C.7a

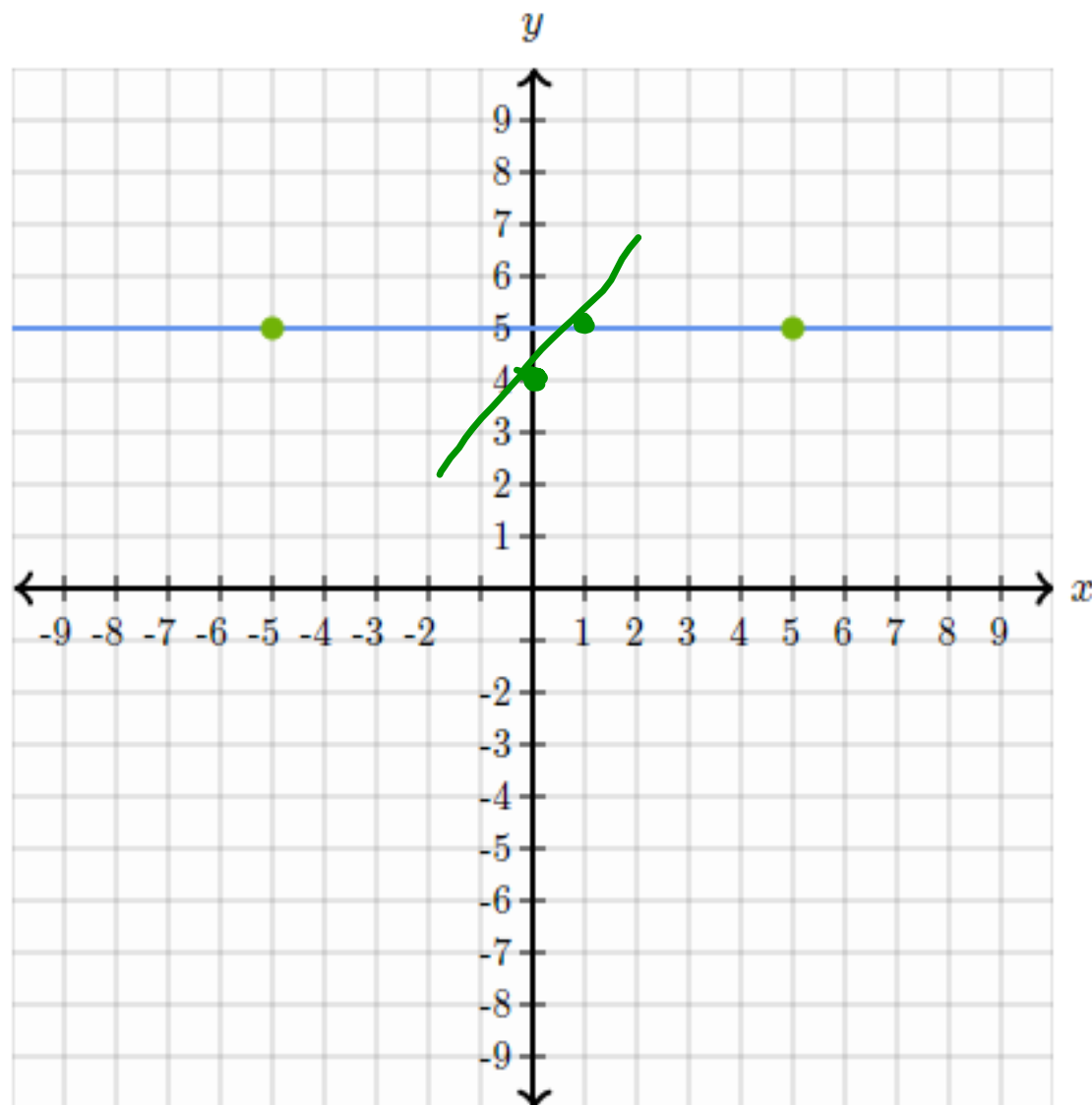
Graph from Slope-Intercept Form

$$y = mx + b$$

$$\frac{3}{2}x + 6$$



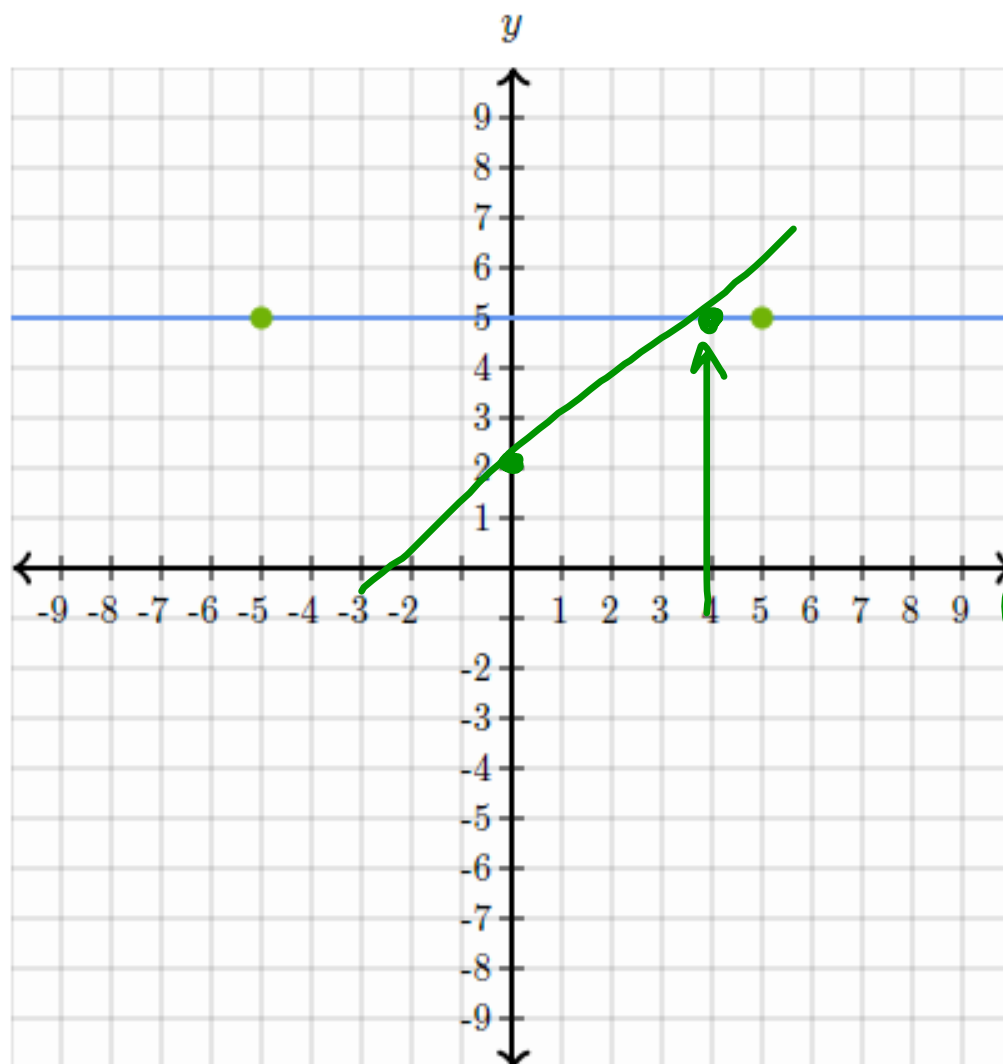
Graph $y = x + 4$.



$\frac{1}{1}$ UP
 $\frac{1}{1}$ right

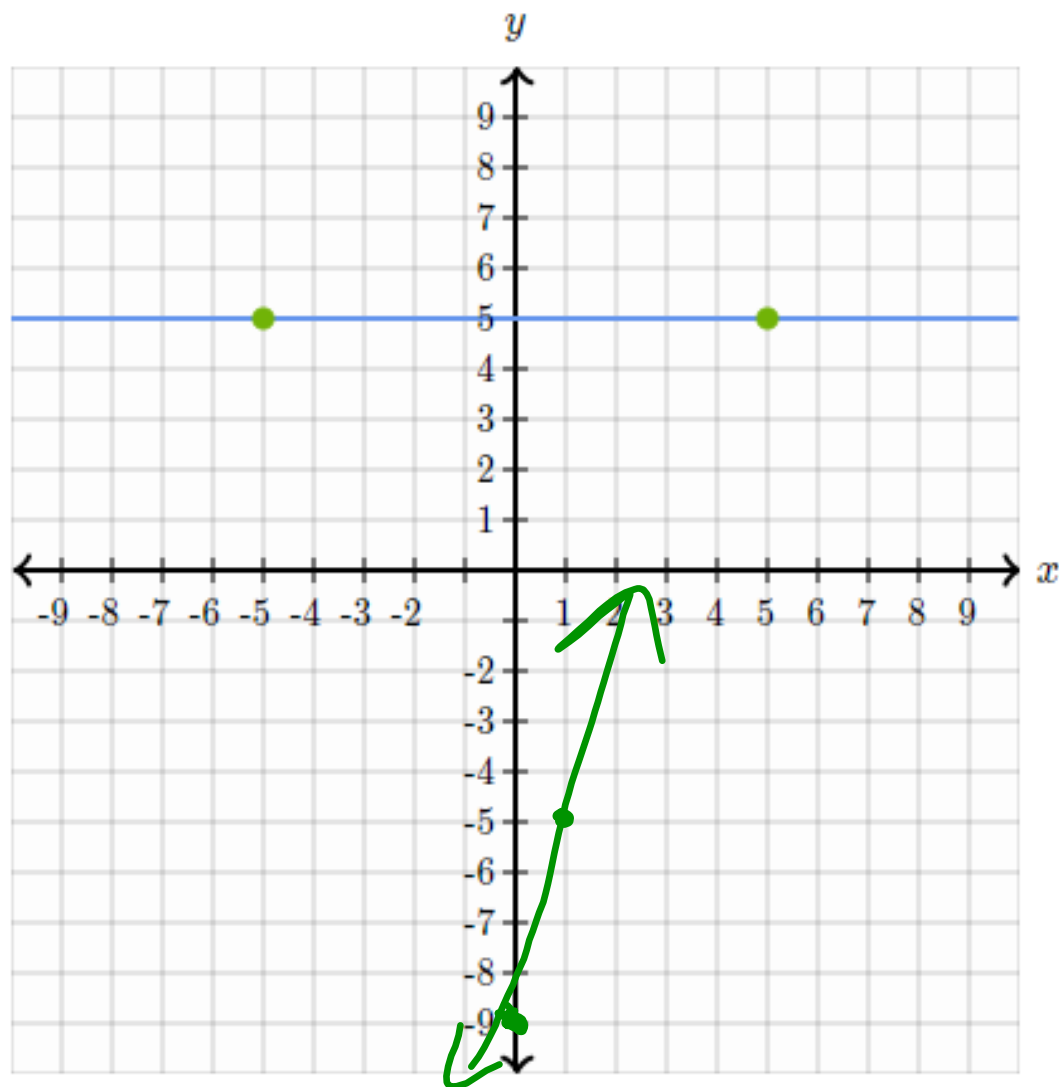
$\frac{-1}{1}$ down
 $\frac{1}{1}$ right

Graph $y = \frac{3}{4}x + 2$.



3
4
UP
RIGHT

Graph $y = 4x - 9$.



$\frac{4}{1}$ up
right

Graph $y = \frac{4}{5}x - 7$.

