

> TODAY'S AGENDA:

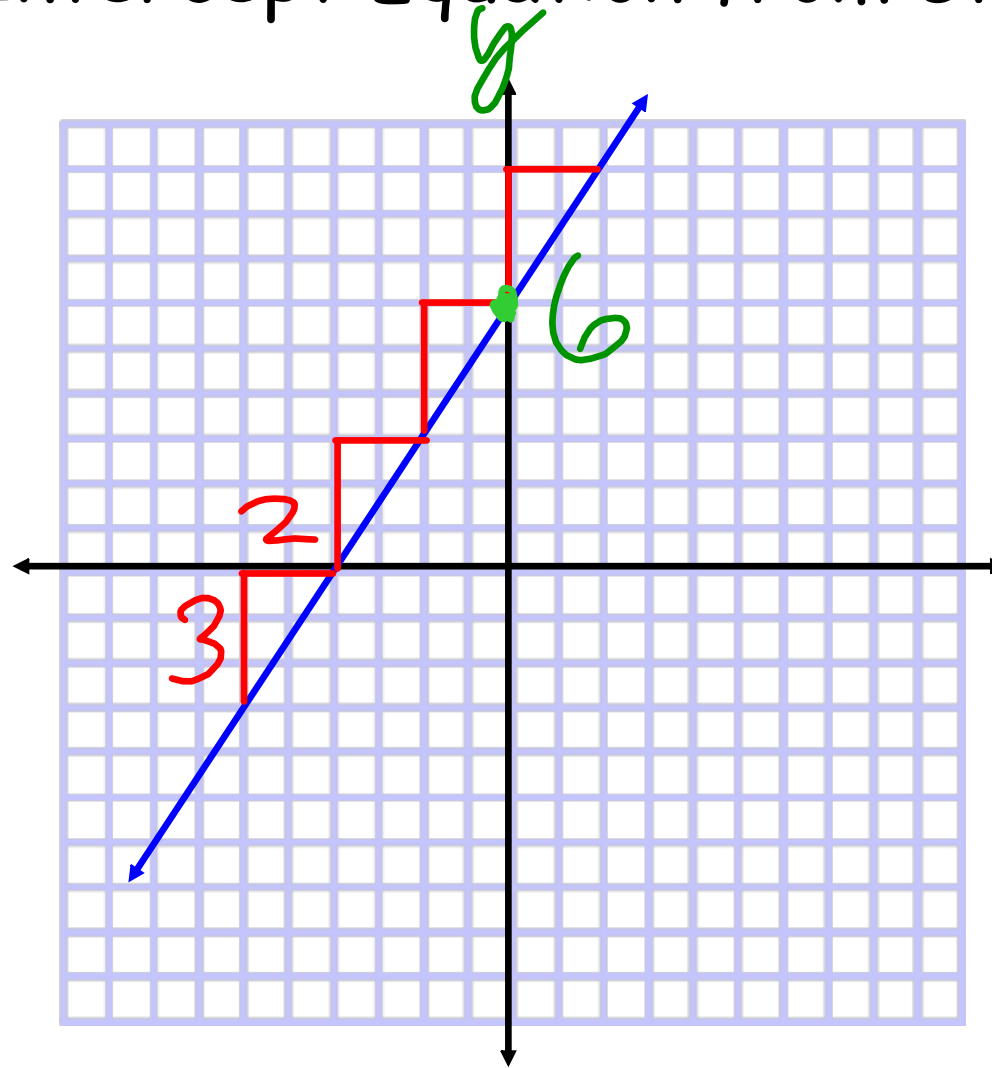
- Continue working on Khan Academy
- Mission: Engage NY Module 4
 - > Slope-Intercept Equation from Graph

- Today's Objective:
 - > Students will be able to graph a line, given the equation of the line in Slope-Intercept Form

- Today's Standards:
 - > 8.F.A.1, 8.F.A.3, 8.F.B.4, HSF.LE.A.2

Slope-Intercept Equation from Graph

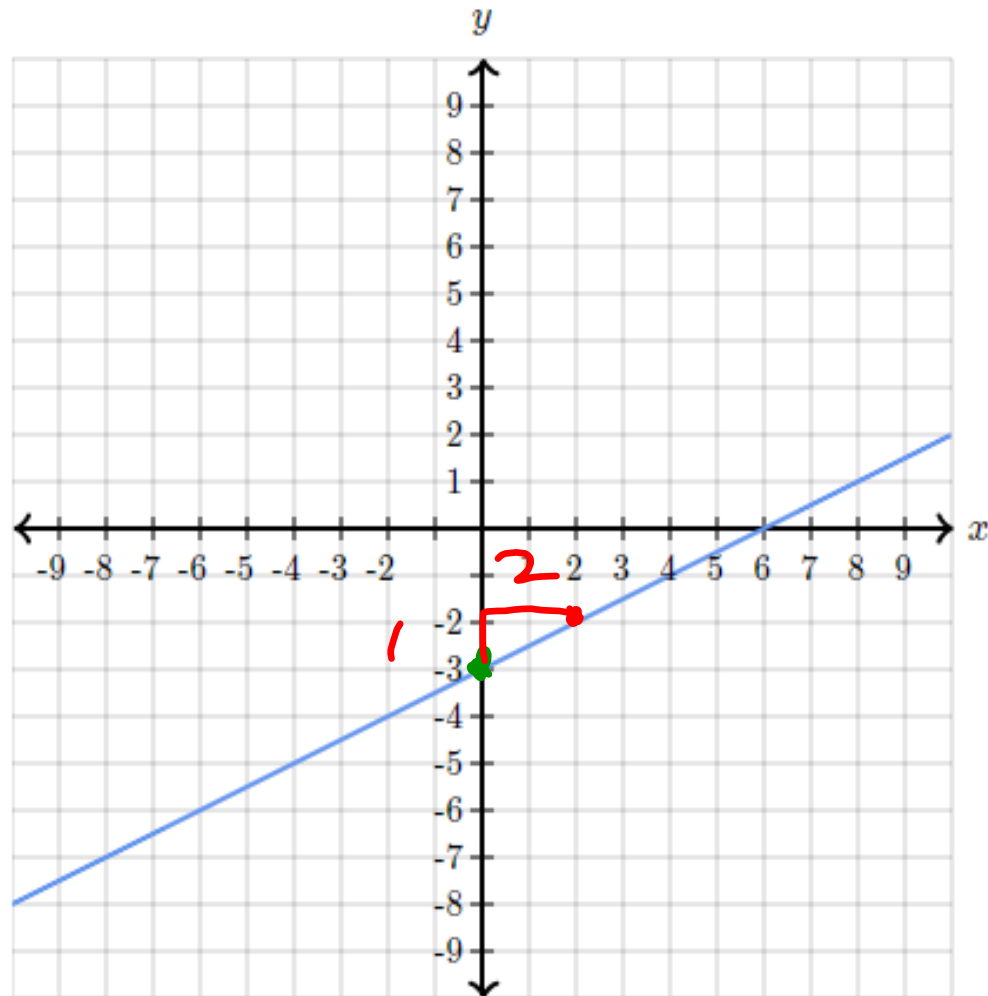
$$y = mx + b$$
$$y = \frac{3}{2}x + 6$$



Find the equation of the line.

Use exact numbers.

$$y = \frac{1}{2}x + -3$$

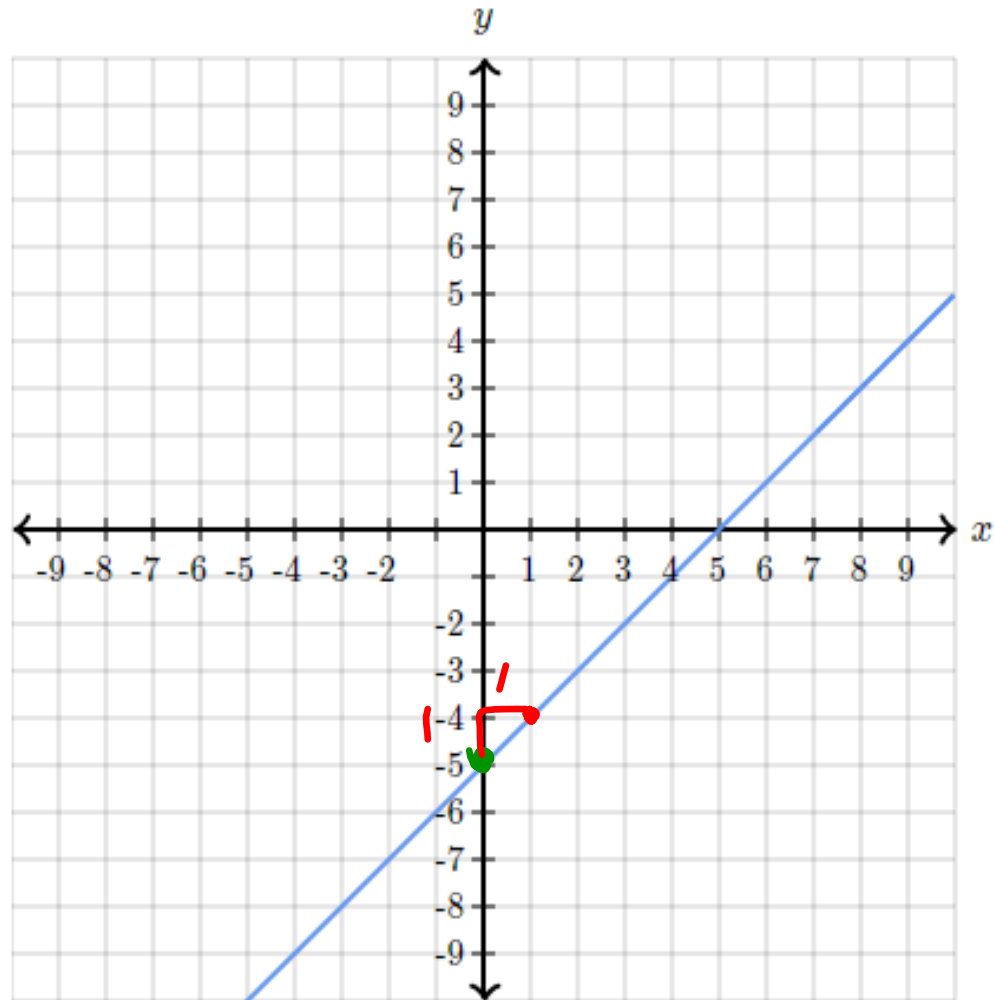


$\frac{1}{2}$ up
right

Find the equation of the line.

Use exact numbers.

$$y = \boxed{1}x + \boxed{-5}$$

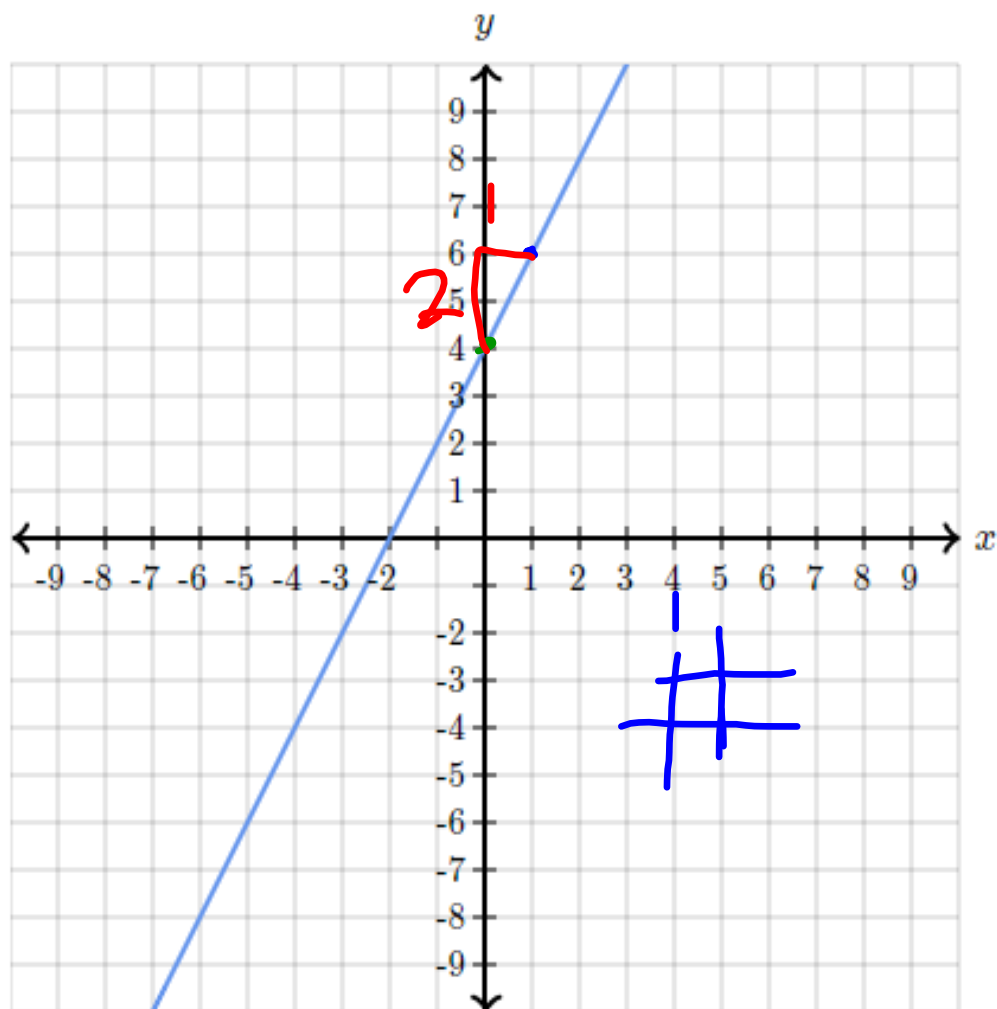


$$\frac{1}{1} = 1$$

Find the equation of the line.

Use exact numbers.

$$y = \boxed{2}x + \boxed{4}$$

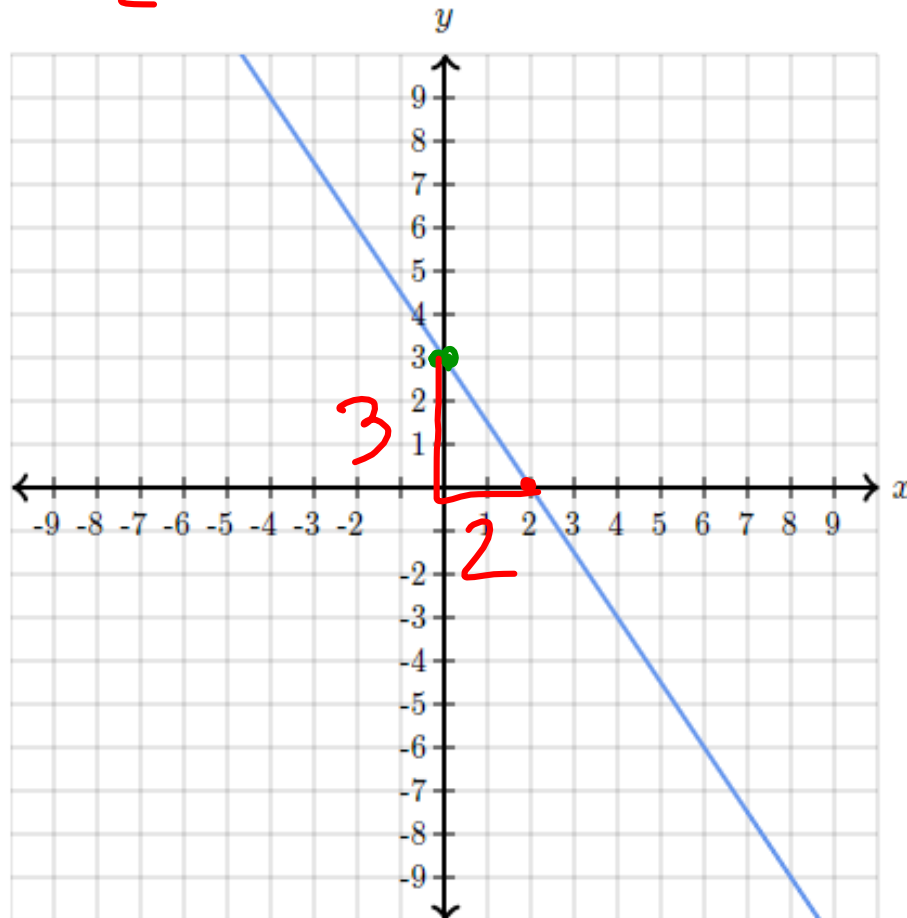


$$\frac{2}{1} = 2$$

Find the equation of the line.

Use exact numbers.

$$y = -\frac{3}{2}x + 3$$



down $\frac{3}{2}$
right 2