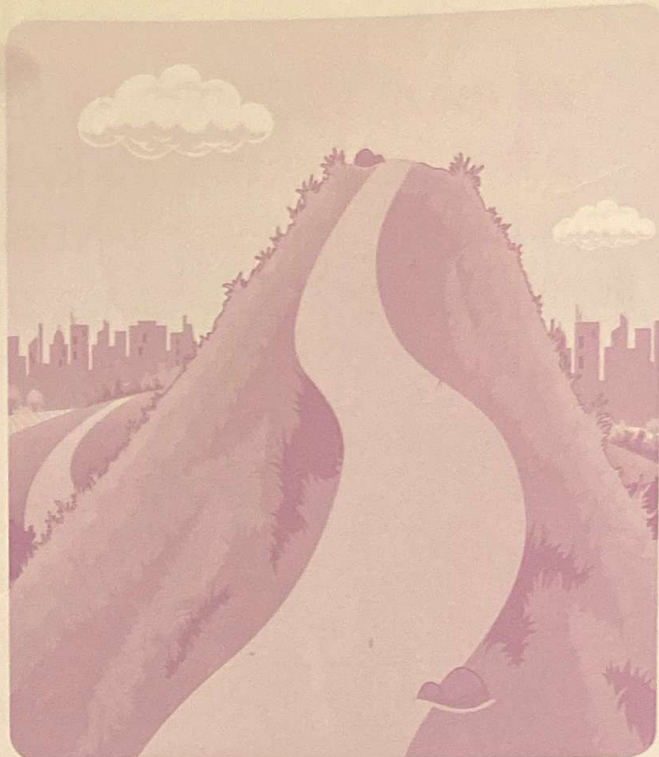


Pedal, Pedal, Pedal

I must pedal, pedal, pedal
Up the giant hill.
My heart beats fast; I'm gasping;
But I will make it—I will!

The fall air is cool and crisp;
The wind whips my face.
The temperature is perfect
As I try to keep my pace.

When I top the biggest hill,
I see the town below.
Then I'm rolling faster, faster;
Down the hill I go.



MONDAY

Find each word in the poem. Draw a line from each word to its meaning.

pedal	how hot or cold it is
whips	how fast or slow you are going
temperature	to use your feet to make wheels turn
pace	hits

TUESDAY

Choose the correct answers.

- The title of the poem is _____.
(A) "I Must Pedal" (B) "Up the Hill" (C) "Pedal, Pedal, Pedal"
- In the poem, what time of year is it?
(A) fall (B) winter (C) spring
- What can the poet see at the top of the hill?
(A) the town (B) the ocean (C) the moon