

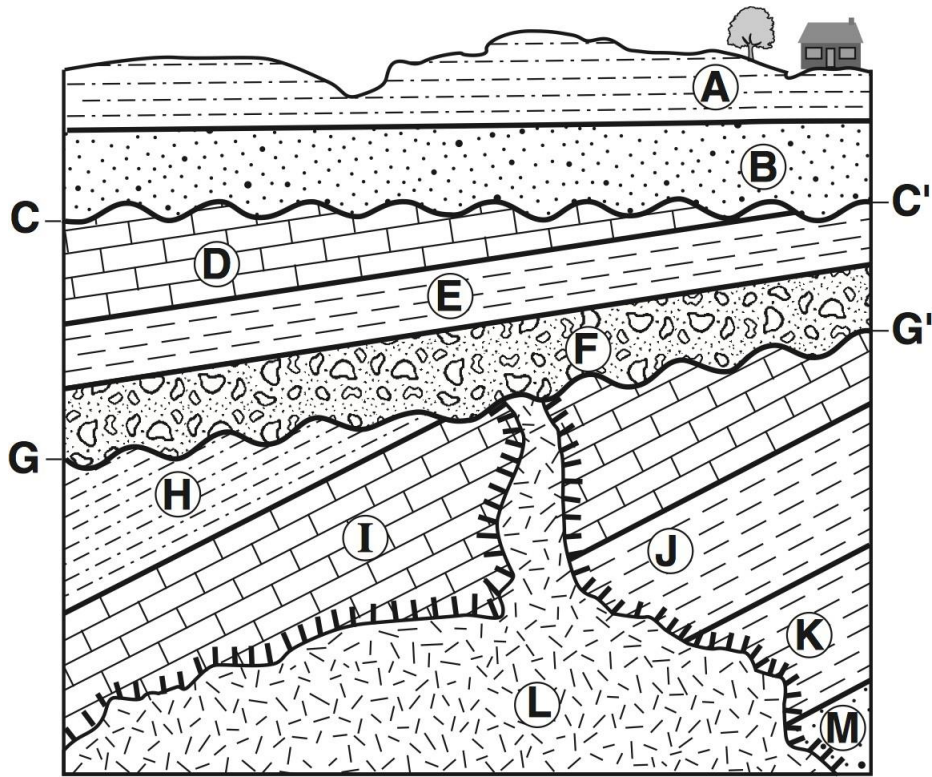
Relative Dating

PART II QUESTIONS: FREE RESPONSE

Use the diagram below and your knowledge of Earth Science to place the following in order from oldest to youngest. Line C - C' and G - G' represent buried erosional surfaces [unconformities].

_____ Youngest

_____ Oldest



Key	
	Igneous intrusion
	Contact metamorphism

Relative Dating

Use the diagram below and your knowledge of Earth Science to place the following in order from oldest to youngest. Line A - A' represents a buried erosional surface [unconformity].

